



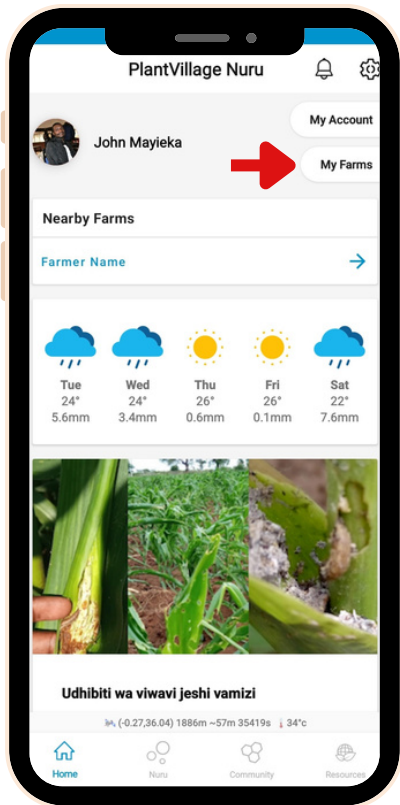
ARTISAN PRO GUIDELINES

2024
.....



BIOCHAR SURVEY ENTRY USING PLANTVILLAGE APPLICATION

HOW TO INSTALL

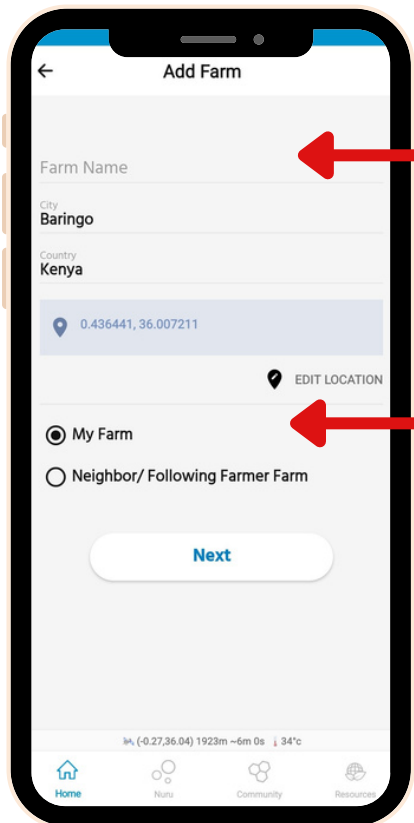
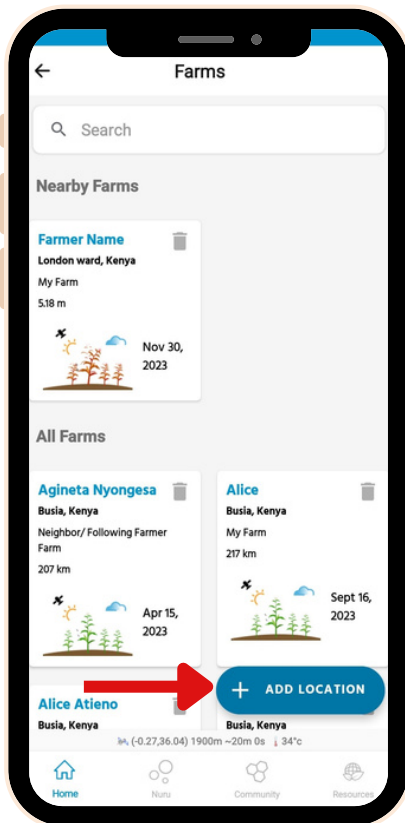


1. Open Google play store OR App store
 2. Search for PlantVillage
 3. Click install
 4. Open the PlantVillage app on your phone
 5. Sign Up
- The app will ask for permissions to take pictures and record video, fetch location and allow you to register.

HOMEPAGE SET UP

- Click on 'My Farms' to add new farmers or to view the farms you've added.
- When you add a new farm, you must visit the farm in order for the app to record the GPS location of that specific lot.

HOW TO ADD FARM



- Click on + Add Location to begin adding a new farmer.
- Please use the format 'Name of Farmer, for example, 'John Taka.
- Click Next.

- Do not delete farms unless they were recorded incorrectly in terms of name or location and you intend to replace them.
- Remember to fill out two fields: the farm name and the farm category.
- The GPS location is automatically recorded by the app. At this point, we would like you to visit each farm lot.

BIOCHAR SURVEY ENTRY USING PLANTVILLAGE APPLICATION

A completed page for reference.

You do not need to enter this information for this purpose and can simply skip it.

BIOCHAR RECORDS/ SURVEY ENTRY

Please confirm that the farm you created appears on the list of farms.

To begin entering a biochar record, click 'Nuru' at the bottom of the page, then choose Biochar Surveys.

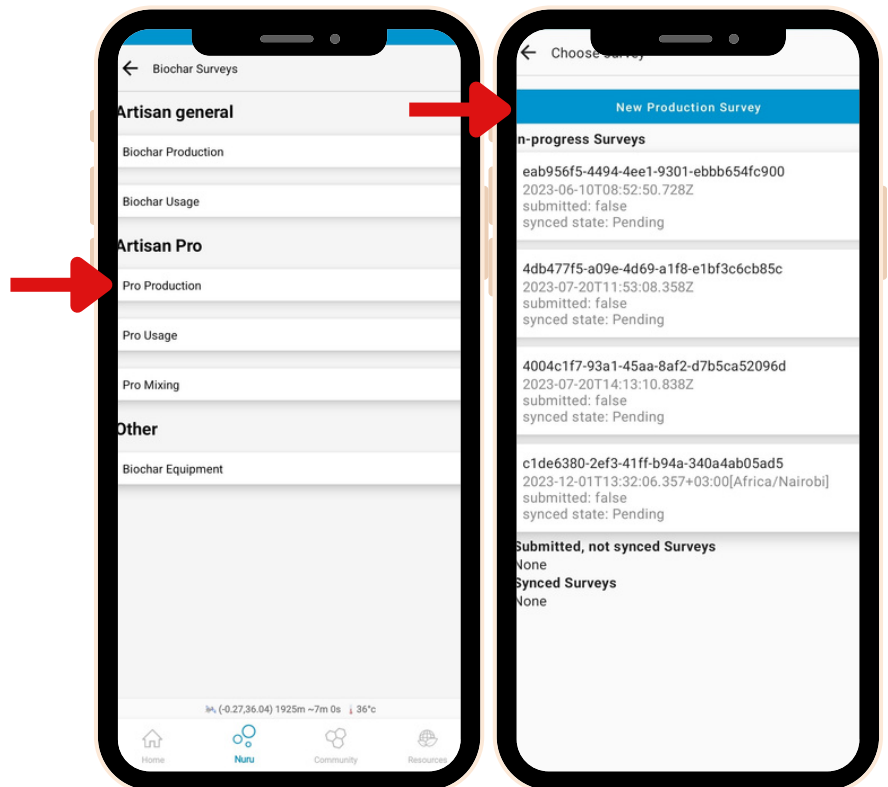
Note: Biochar Records are referred to as Surveys in the PlantVillage app.

HOW TO ENTER DATA FOR ARTISAN PRO

To begin entering a biochar record, select Pro Production. To begin a new record, select 'New Production Survey'.

After you've started submitting records, you'll be able to see completed or in-progress submissions on this page.

Note: In the app, Biochar Make is referred to as Production.



HOW TO ADD PICTURES AND DATA

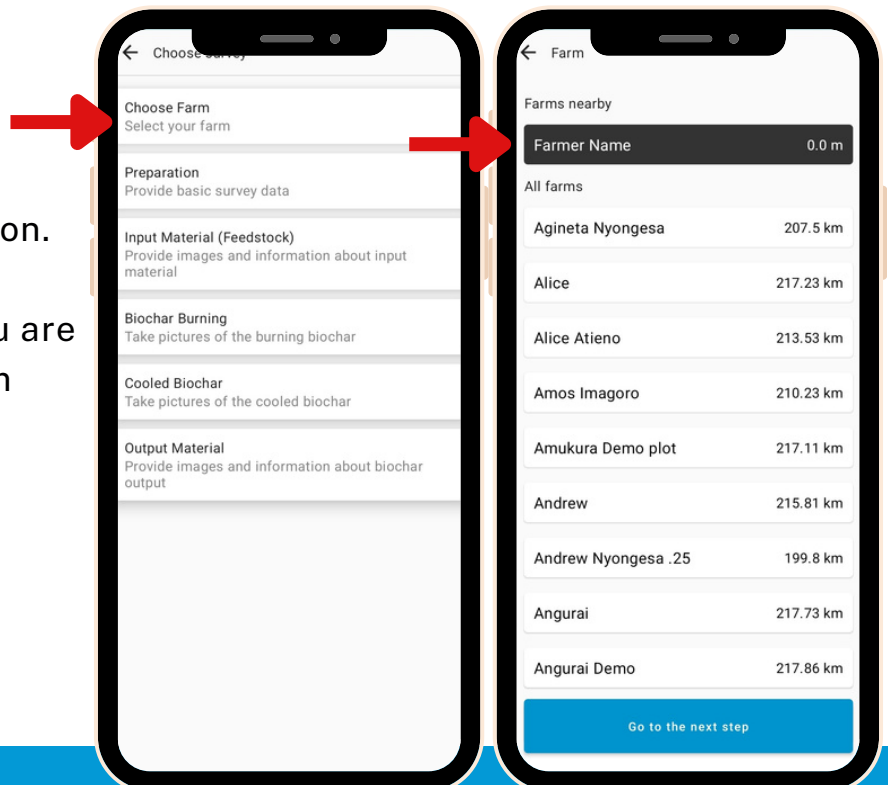
This page has four sections for entering data.

Click 'Choose Farm' to begin entering data for a new production.

Choose the name of the farm you are currently producing biochar from the list of farmers.

We'll use 'Farmer Name' as an example.

To proceed, tap 'Go to the next step'.



HOW TO ENTER BIOCHAR PREPARATION DATA

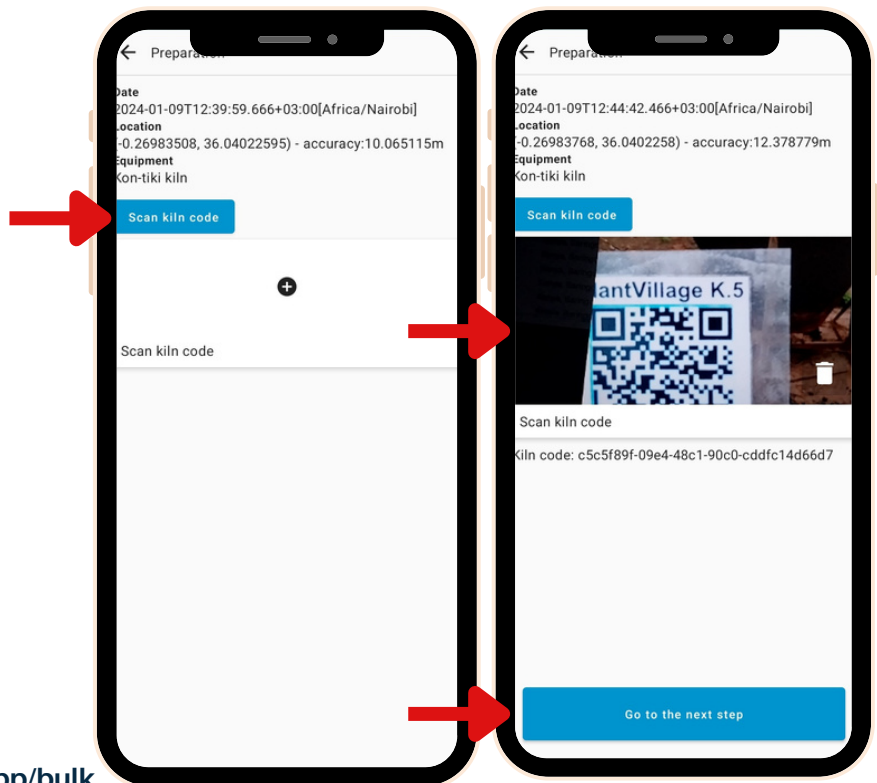
Next you will enter data about the Biochar Preparation.

Scan the QR code assigned to the kiln.

After you have scanned the QR code, a button that says 'Go to the next step' will appear. Tap it to proceed.

Link to generate QR codes.

<https://plantvillage.github.io/uuid-qr-webapp/bulk>



HOW TO ADD PICTURES AND DATA

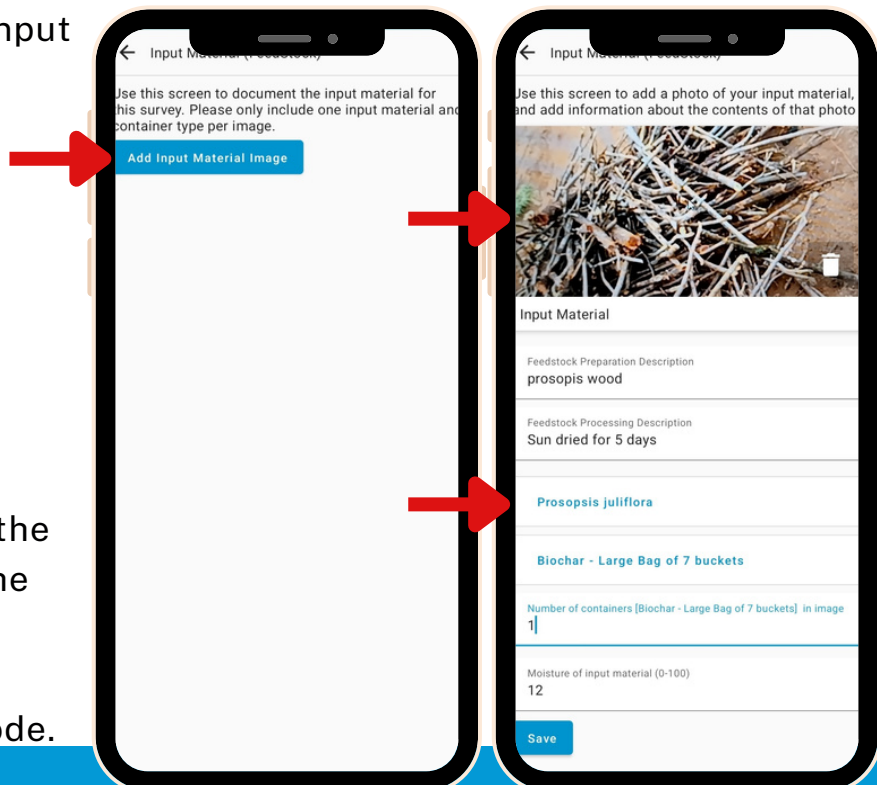
Next you will enter data on the input material image (Feedstock).

Add Feedstock preparation and processing description.

Add Feedstock type. We'll use 'Prosopis juliflora' from the dropdown menu as an example.

After you have completed all of the fields, tap 'save' to proceed to the next step.

Note: Take images in portrait mode.

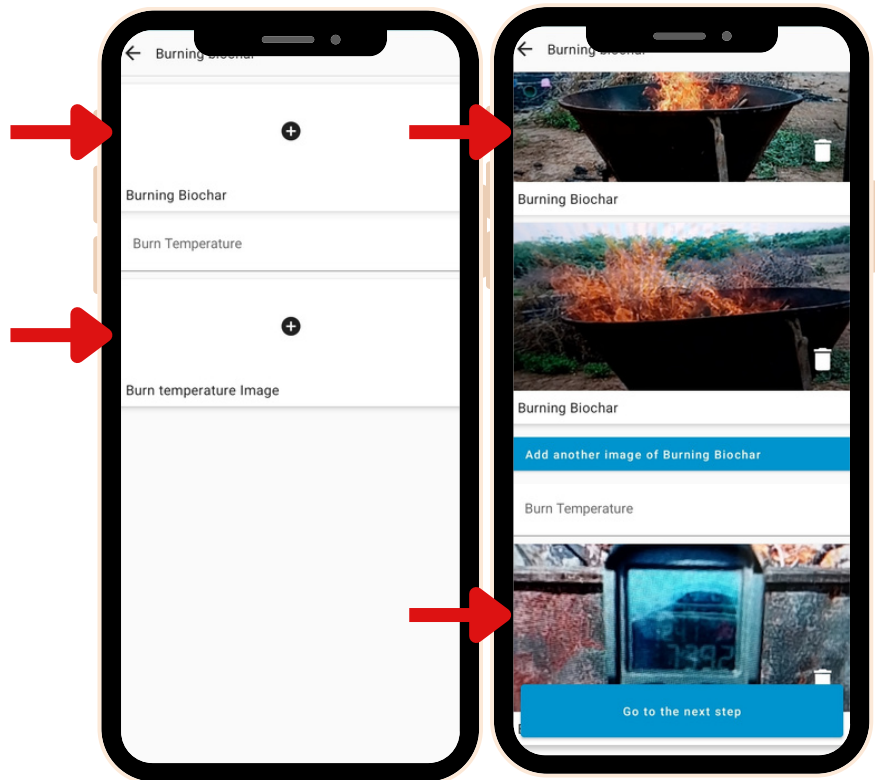


HOW TO ADD PICTURES AND DATA

Next you take pictures of burning biochar in the kiln.

Add burning temperature image recorded using an infrared thermometer.

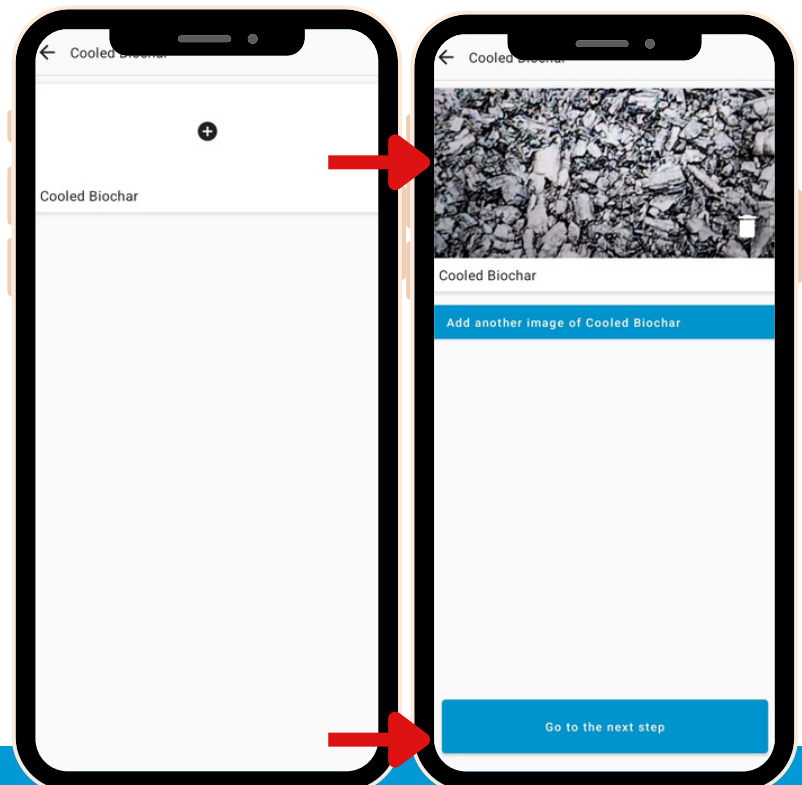
Click 'Go to the next step' to proceed.



HOW TO ADD PICTURES AND DATA

Next you add images of cooled biochar in the kiln/bags.

Click 'Go to next step' to proceed.



HOW TO ENTER THE OUTPUT MATERIAL PICTURES AND DATA

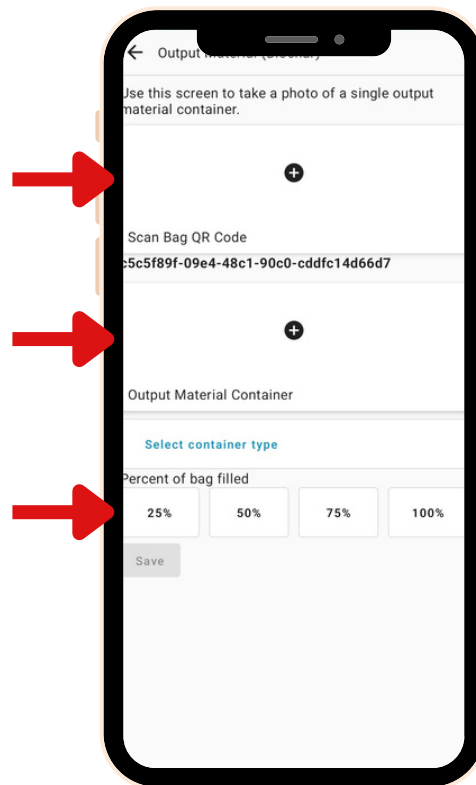
Next you add the output material image (Biochar Produced).

Tap the plus sign and scan the QR code (each bag's QR code is added individually).

Add output material container (each bag's image is added individually).

Select container type used to fill the bag.

Add percent of bag filled from number of containers used to fill the bag.



A COMPLETED PAGE FOR REFERENCE

Save and proceed.

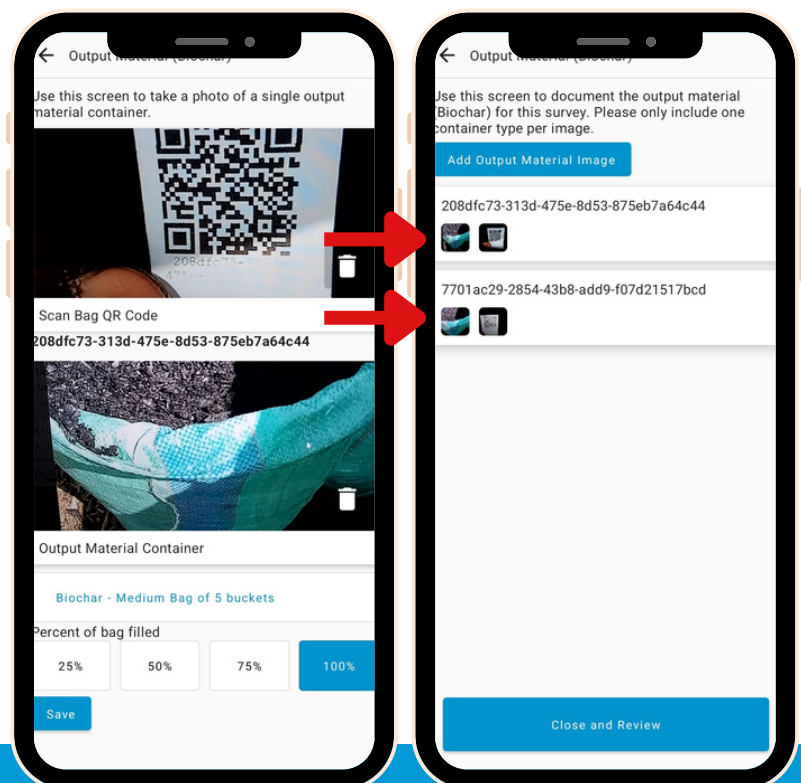
Add each bag individually at the 'add output material image'.

Add all the bags produced for each production batch before you close and review.

Tap 'Close and Review' to proceed.

Link to generate QR codes

<https://plantvillage.github.io/uuid-qr-webapp/bulk>



FINISH AND SUBMIT SURVEY

Last part before submitting a survey.

Confirm every input is added correctly.

When you are certain that everything is correct, click the 'Finish Survey' button. You will be unable to make changes after this point.

Choose Survey

Choose Farm
Farmer Name

Artisan General certificate
Create certificate

Preparation
Provide basic survey data

Input Material (Feedstock)
Provide images and information about input material

Biochar Burning
Take pictures of the burning biochar

Cooled Biochar
Take pictures of the cooled biochar

Output Material
Provide images and information about biochar output

Finish Survey

Contact Us



dhughes@psu.edu



www.plantvillage.psu.edu